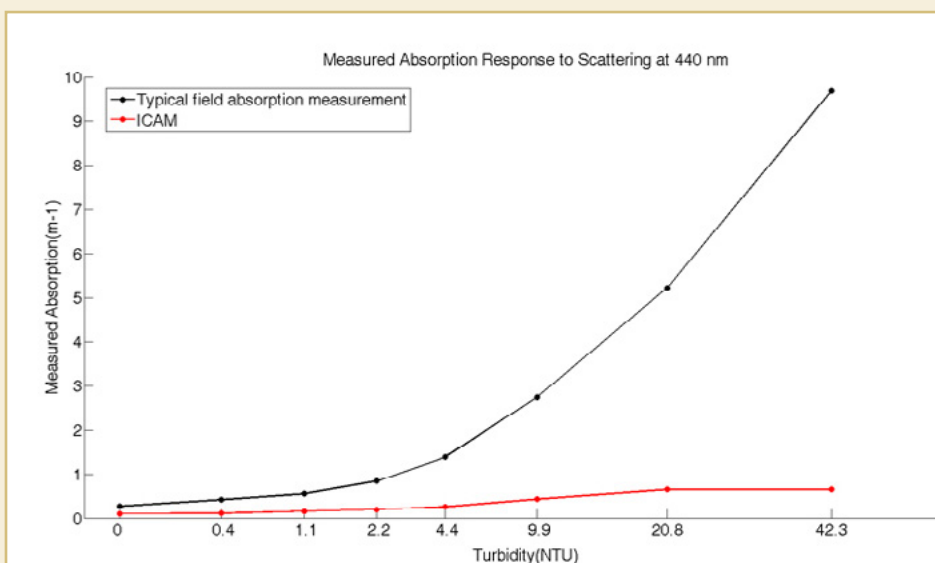


### Highlights of the ICAM

- 9 wavelengths – UV to Red
- Minimal to no scattering effects
- Excellent sensitivity & range
- Low power, standalone operation
- Solid-state optics and electronics in an integrated package

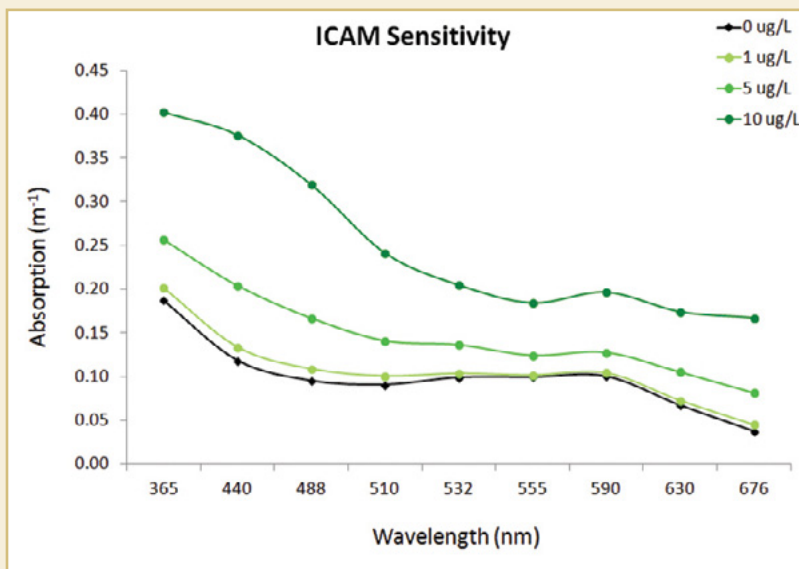
### Integrating Cavity Absorption Meter (ICAM)

ICAM, an *in situ* Integrating Cavity Absorption Meter, is factory configured with nine (9) wavelengths from UV (365nm) to Red (676nm) enabling absorption measurements over a wide spectrum. The patented integrating cavity design means that little or no scattering correction is needed. Built with solid-state optics and electronics, ICAM provides excellent reliability and low power consumption in a fully integrated package. Absorption can be measured from  $0.001 \text{ m}^{-1}$  to a maximum of  $15 \text{ m}^{-1}$ . Data can be collected at a maximum rate of six measurements per second using the ICAM GUI. Alternately, ICAM can be configured for standalone operation running off battery power with data logged internally at a maximum rate of one measurement per second. Each measurement has a date/time stamp and may contain up to nine (9) absorption values depending on the wavelengths selected.



ICAM's patented design allows researchers to measure absorption with very little or no interference from particle scattering, maximizing measurement accuracy. Data show a minimal effect from scattering particles on ICAM's response versus typical spectrophotometric response.

**Patent# RE41,682**



ICAM has great sensitivity, able to detect algae at very low concentrations (<1ug/L).

## ICAM Wavelengths

365, 440, 488, 510, 532, 555, 590, 630, 676

## ICAM Physical Specifications

Weight in Air	15 kg; 33 lbs
Length	78.7 cm; 31 in
Diameter	17.8 cm; 7 in
Material	
Pressure Hull	Titanium Type 2
Endcaps, Handles, Supports	Acetal Plastic
Temperature	-2 to 50 degrees C
Depth	0 to 200 meters
ICAM Total Volume	0.4L
Max Flow Rate	4.5L/min

## ICAM Electrical Specifications

Output	Digital (ASCII)
Interface	USB, RS-232
Data Output Rate Maximum	1/sec RS-232; 6/sec USB
Minimum Power Supply	8 - 30 volts; 25 watts

## Ordering Information

INSTRUMENT	PART NUMBER
ICAM	3200-000
ICAM ACCESSORIES	PART NUMBER
Submersible Battery, Charger & Cable	3200-600
0.6 meter Pigtail Cable	2200-170
10 meter Extender Cable	105-2595
25 meter Extender Cable	105-2596
50 meter Extender Cable	105-2597
Boosters (required for >10 m)	2200-900
Replacement Intake Copper Kit	3200-560
Replacement Cleaning Brush Assembly & Heads (5)	3200-550
Replacement Cleaning/Drying Heads (5)	3200-551
Replacement Interface Cable	3200-150

## Contact Us

Toll-Free : 1.877.316.8049

Phone : 408.749.0994

Fax : 408.749.0998

Email : sales@turnerdesigns.com

Web : www.turnerdesigns.com

Address:

845 West Maude Avenue

Sunnyvale, CA 94085