

**Good performance
isn't a question
of shape.**



HO 40 – HO 100

The square top loaders from Nabertherm are extremely robust and tried and tested over many years.

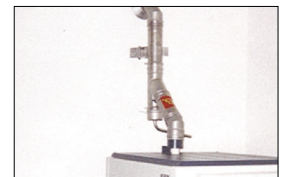
The following features make these kilns something special:

- Corrosion-proof stainless steel housing
- High quality insulation
- Low energy consumption
- Attractive purchase price
- Heating elements on support tubes for uninhibited heat radiation
- Heating from 2 sides with uniform heat distribution
- Air vent and extraction facility

Model	T _{max}	Inner dimensions in mm			Volume in litre	Outer dimensions in mm			kW	Weight in kg
		w	d	h		W	D	H		
HO 40	1300 °C	330	330	390	40	560	630	660	3,0	90
HO 70/L	1200 °C	410	400	430	70	640	700	750	3,6	120
HO 70/R	1300 °C	410	400	430	70	640	700	750	5,5	120
HO 100	1300 °C	450	450	500	100	700	700	830	5,5	160

**A perfect
solution!**

To guarantee the right climate, we can request supply you with compact, easy-to-install outgoing air piping made of durable stainless steel for your new kiln. Call for our latest brochure.



**Electronically
controlled –
child's play!**

A kiln is only as good as its control allows it to be. The aim is quite simple: easy operation, high control precision and safety. All Nabertherm kilns are equipped with **Program Controller S 3/C 3** as standard. If you want even more sophistication select controller **S 7/C 7** or **S 30/C 30**.



Program Controller **S3/C3**



Program Controller **S7/C7**



Program Controller **S30/C30**

Controller S3/C3	Controller S7/C7	Controller S30/C30
Delayed program start 2 heating ramps (one is adjustable) 1 settable hold time available as option. Safety strap to lock controller 2 programs can be saved (biscuit and glaze firing)	Delayed program start 2 heating ramps (Both adjustable) 1 settable hold time available as option. 1 settable cooling ramp 1 settable cooling ramp 6 programs can be saved.	18 adjustable programs (for heating, dwell time or cooling) 9 programs can be stored, extra function (e.g. for cool air blower), real-time clock for delayed program start, information key for fault detection, program can be displayed as table.